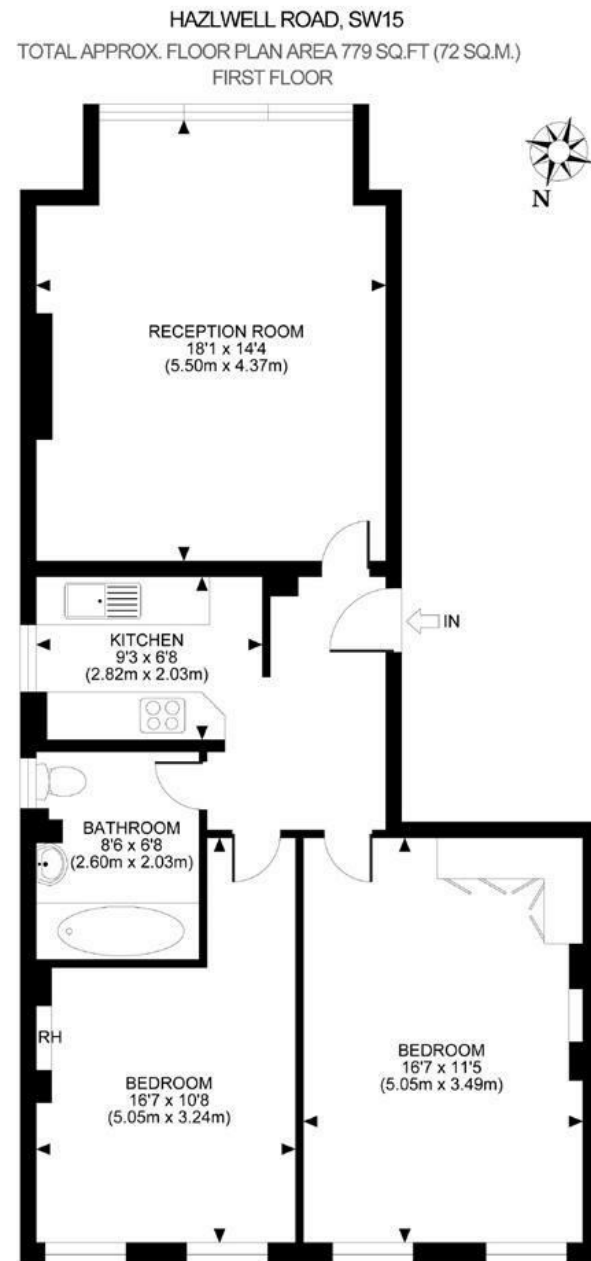


Hazlewell Road, Putney, SW15

A stunning two double bedroom flat occupying the first floor of this handsome semi detached period house in the heart of Upper West Putney. Offered on an unfurnished basis and benefiting from stripped wood floors throughout, the accommodation comprises an entrance hallway, elegant reception room, fully fitted kitchen, principal bedroom with fitted wardrobes, further double bedroom and smart bathroom with shower over the bath. This lovely flat is beautifully presented throughout and offers nearly 1000 sq ft of living and entertaining space. The amenities and transport on the high street are all within walking distance. Available mid May 2026.



- STUNNING PERIOD FLAT
- FITTED KITCHEN
- BATHROOM
- GREAT LOCATION
- COUNCIL TAX BAND E
- ELEGANT RECEPTION ROOM
- TWO DOUBLE BEDROOMS
- STRIPPED WOOD FLOORS
- EPC D

Per Calendar Month
£2,750 Per Calendar Month



All measurements walls, doors, windows, fittings and their appliances, their size and locations are shown conventionally and are approximate only and cannot be regarded as being a representation either by the seller or his agent nor zentuvo
www.zentuvo.co.uk

DISCLAIMER•These particulars are intended to give a fair and substantially correct overall description for the guidance of intending purchasers and do not constitute an offer or part of a contract. Prospective purchasers and/or lessees ought to seek their own professional advice.
•All descriptions, dimensions, areas, references to condition and necessary permissions for use and occupation and other details are given in good faith and are believed to be correct, but any intending purchasers should not rely on them as statements or representations of fact, but must satisfy themselves by inspection or otherwise as to the correctness of each of them.
•All measurements are approximate.



